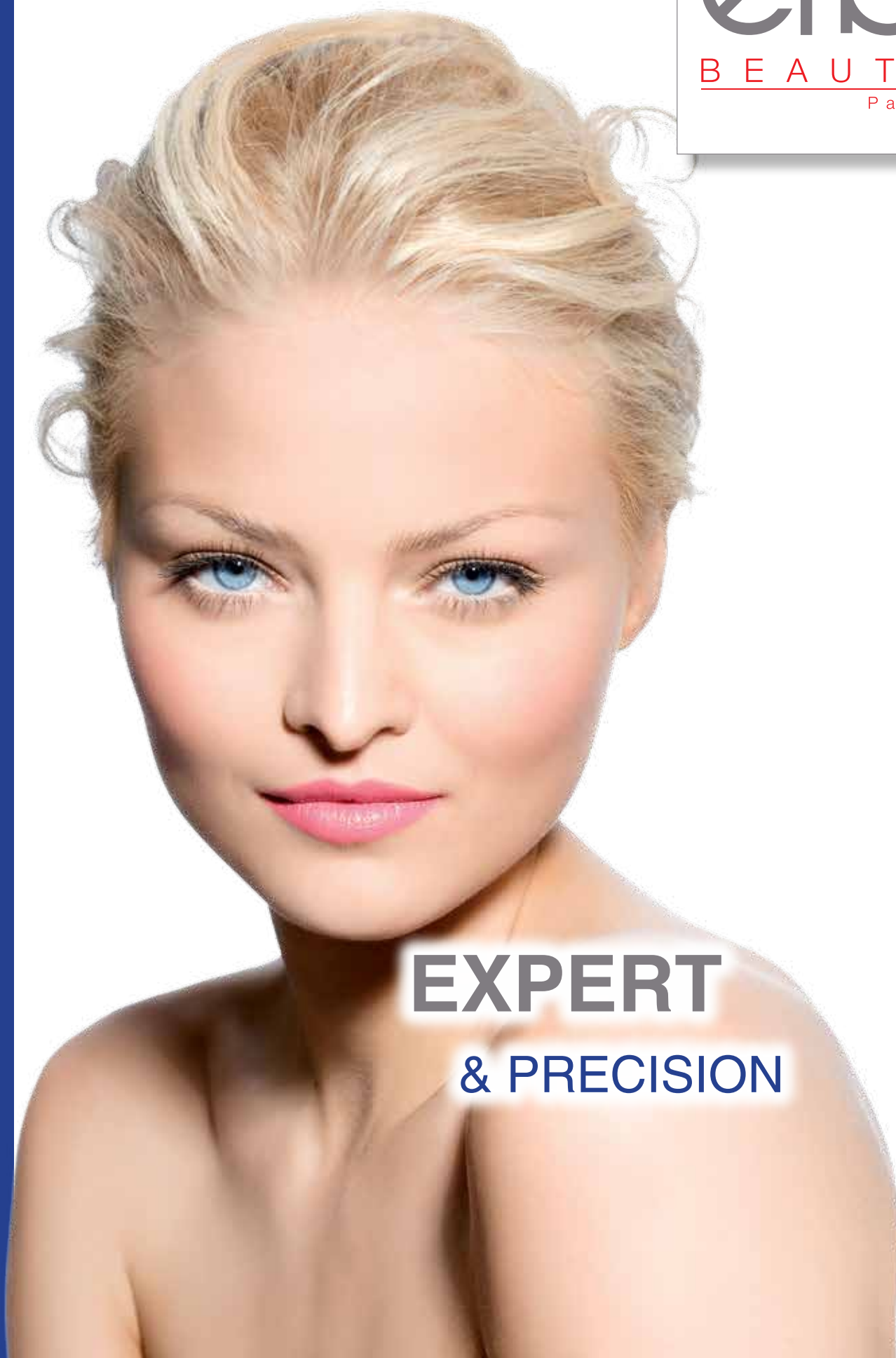


Anthélia®



EXPERT
& PRECISION



Machine
warranty:
2 years

Anthélia® is the result of EFB beauté® technical expertise in IPL.

For almost 30 years, EFB has been manufacturing the only devices on the market that ensure a constant level of pulsed light energy throughout the lifespan of their applicators thanks to an **exclusive patented process, the SRE**.

- Rapidity ★★★★★
Up to 3 flashes / second
- Security ★★★★★
Double optical filter
- Precision ★★★★★
Continual quality and constant performance

Pigmentary treatment⁽¹⁾

1 to 4
sessions



➤ Before treatment



➤ After 10 days
(in 1 session)

The EFB pulsed light energy provides the specific heat source necessary to locally reduce the excess of melanin in the skin to eliminate dark spots caused by ageing.

Photovascular Treatment⁽¹⁾



➤ Before treatment



➤ After 2 sessions

The EFB beauté® filtered light provides the specific heat source required to contract small vessels and progressively ensure the disappearance of spider veins and telangiectasia.

3 to 6
sessions



(1) Medical treatment to be performed by medical doctors only in respect of current legislation in the country concerned.

Anthélia®, the outstanding performance of EFB beauté® pulsed light. Treatments for face and body...



► Photo-tenseur and anti-aging (SR)

- Reduces wrinkles and fine lines
- Stimulates the production of collagen and elastine
- Firms up and lifts the skin,
- Unifies the complexion

► Vascular lesions⁽¹⁾ (SR)

- Reduces vascular lesions
- Reduces erythrose
- Treats spider veins, angiomas and rosacea



► Acne⁽¹⁾ (SR)

- Treats inflammatory and bacterian acne
- Weakens the production of sebaceous glands

► Pigmentary Lesions⁽¹⁾ (SR)

- Erases dark spots caused by sun damage
- Reduces the effects of ageing

The 3 modes of photo-epilation available with Anthélia®, enable to offer for all treatments.

Perform hair removal all year long



► Photo-epilation (HR)

permanent hair removal of dark and brown hair including the very finest hairs, on fair and dark skins.

Reduces excessive hairiness in conditions such as hirsutism and hypertrichosis

► Photo-epilation permanent for blond and white hair (SR)

Technology and protocol created and patented by EFB.

World-wide exclusive innovation⁽²⁾



► Rafale Photo-epilation (RHR)

Painless hair removal of dark and brown hair, on fair and dark skins all year long, 72 hrs after sun exposure.

Ideal for sensitive and tanned skin.



(2) Anthélia® equipped with a specific applicator for blond/white hair

Rafale technology

The new method of continuously pulsed light **RAFALE technology** generates a soft continuous light with low fluencies but high speed.

Ideal for long-lasting photo-epilation of sensitive skin, the skin is stroked several times to gradually increase the temperature of the hair roots and destroy them.

No more discomfort, **the treatment experienced with the RAFALE technology is smooth and brings a pleasant feeling of warmth.**

While treatments using Intense Pulsed Light and LASER imply no sun exposure at least 4 weeks before each treatment, **the soft RAFALE technology treatment enables to flash tanned skin 72h before and after sun exposure.**

Total Protect



Perform Rafale photo-epilation in perfect safety and comfort. Your eyes are protected thanks to the new pair of protection goggles available for Anthélia®.

A new EFB patented filter reduces the spectrum of light emitted by IPL 200 times more effectively than standard IPL goggles.

Warranty and Service⁽³⁾



- 2-year warranty, parts and labor (excluding consumables)
- Extended warranty for 3 or 5 years available
- Hot Line:
Our technicians are available to answer all your technical and practical questions

(3) Refer to the contractual terms

Made in France

Created in 1989, EUROFEEDBACK has been specialised in the design and manufacturing of specific electronic equipments for the Space and Military fields.

In 1994, EUROFEEDBACK started developing a line of professional IPL equipment for the Industry, Medical and Aesthetic sectors.

The assets of Anthélia®

- Effective and long lasting photo-epilation of blond, white, dark hair and very thin hairs
- Tested products and proven performances
- Ultra fast treatments with 3 flashes every second
- Safety and effectiveness on sensitive and tanned skin thanks to the Rafale photo-epilation
- Equipment certified CE Medical Device marking according to the EEC Directive 93/42/EEC
- Patented SRE system ensuring the stability of energy
- Performance of UV filter with patented DSF system
- Easy to use preselected parameters
- Real-time reminders of instructions on screen
- Easy tracking of the flashes consumption
- Gentle and comfortable treatments
- Integrated Customer Management Software
- 10.4 inch, intuitive, ergonomic, color touch-screen in a 4/3 format
- Evolutive hardware with the front USB port for software update
- Easy maintenance at a low cost
- In conformity with international electrical safety regulation
- Innovative technology with 17 patents
- Compliance with Canadian Medical Devices Conformity Assessment System
- Choice of language and local time zone



The clients management software

The software enables you to create your own operators and clients database:

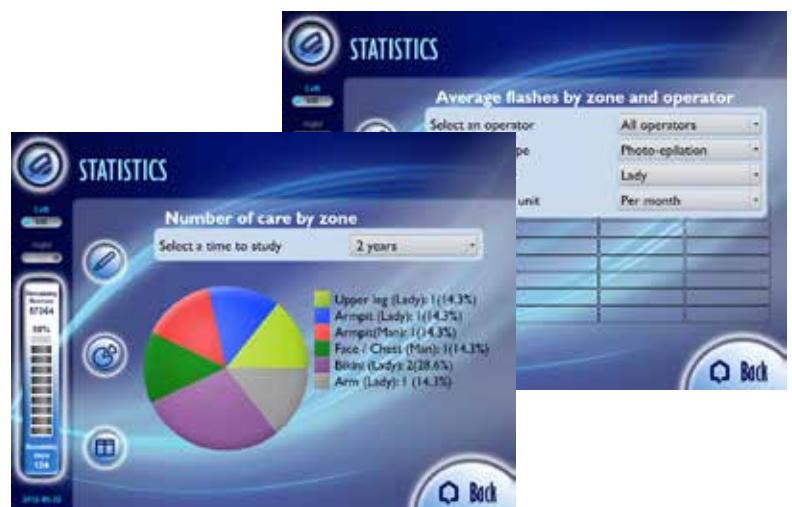
- Management of several operators accounts with follow-up treatments
- Follow-up of the sessions evolution per customer
- Automatic adjustments suggestions in the course of the sessions
- Entering comments related to a care for each customer



Statistics and graphs available:

- by type of treatments,
- per client,
- per operator,
- by treated areas

Number of sessions and number of flashes used available.



Option

- Activation of the GSM system to top-up flashes remotely and to follow the evolution of your consumption.



Anthélia® technical data⁽⁴⁾



Anthélia® with Rafale technology

- Worry no more about UV exposure
- Painless and fast
- Easy to use - preset parameters
- CE certified
- Integrated Client Managment Software
- Statistics on treatments available

	Photo-epilation dark and brown hair	Photo-epilation Rafale dark hair, sensitive and tanned skin	Photo-rejuvenation and white hair photo-epilation
Applicator	HR (basic)	RHR (optional)	SR (optional)
Output energy	12 to 24 J/cm ²	4 to 6 J/cm ²	6 to 23 J/cm ²
Treatment spot size	7,5 cm ²		3,75 cm ²
Wavelength	610 nm to 1100 nm		475 nm to 1100 nm
Phototypes	1 to 6		1 to 4
Maximum rate	Up to 1 flash per second	Up to 3 flashes per second	Up to 1 flash per second
Lifetime of lamp	30 000 to 60 000 flashes depending on the model	1 million of flashes	30 000 to 60 000 flashes depending on the model
Pulse type	Monopulse, ideal for fair skin & multi-pulse, ideal for dark skin	Rafale, ideal for dark, sensitive and tanned skin	Monopulse, ideal for fair skin & multi-pulse, ideal for dark skin

(5) Depending of your country.

(4) Informative specifications

Contact distributor

efb
B E A U T É[®]
Paris



ELEDIS Innovation
ZI Petite Montagne Sud
3 rue de l'Aubrac
CE1724
91017 Evry Cedex
France

www.efbbeaute.fr

contact@efbbeaute.com
+33 (0)1 60 86 26 26